

L-1 3D FaceReader Solutions

# 3D Face Reader

**L-1 Identity Solutions - Market Leader with the Most Deployed 3D Face Systems Worldwide.**

Provide employees with lightning-speed access to your offices and restricted areas using L-1 3D face reader solutions - the 3D Face Reader and 3Di Admin Manager. L-1 face readers authenticate users in under a second and are optimized for high-traffic areas.

L-1 3D face readers combine:

## **SPEED**

Real-time 3D imaging technology for instantaneous matches using a person's facial structure

## **SECURITY**

Authenticate employees before they enter areas containing valuable assets

## **CONVENIENCE**

Employees only have to pause on their way into work for hands-free access

## **PRECISION**

Use up to 40,000 data points to make accurate matches

## **USABILITY**

Accommodate a range of facial positions and poor lighting conditions

## **Access Control Made Fast, Effortless and Secure**

Provide employees with lightning-speed access to your offices and restricted areas. L-1 3D face reader solutions and the 3D Face Reader increase security while maintaining high throughput access into buildings, making the process effortless for employees. You can have the peace of mind of knowing only authorized personnel can access restricted areas containing vulnerable computer equipment and confidential documents.

### **Superior Matching Engine**

- Authenticate users in under a second
- Differentiate between identical twins
- Accurate matching using 40,000 data points

### **User Friendly**

- Hands-free access for the ultimate in convenience
- 4-inch color LCD screen to aid in user positioning
- Customizable voice prompts

### **Easy Installation**

- Embedded platform with built in processing and biometric matching right on the device
- Designed for the future of access control - IP capability means less cables and components to install
- Interface directly to existing access control panels and card readers using Wiegand, RS232, RS422 or RS485 interfaces

### **Support for Large User Bases**

- Handle a high volume of traffic in order to authenticate thousands of employees as they start a new shift
- Store up to 60,000 templates in the database verification
- Log 100,000 events for audit trails

### **Multi-Factor Authentication**

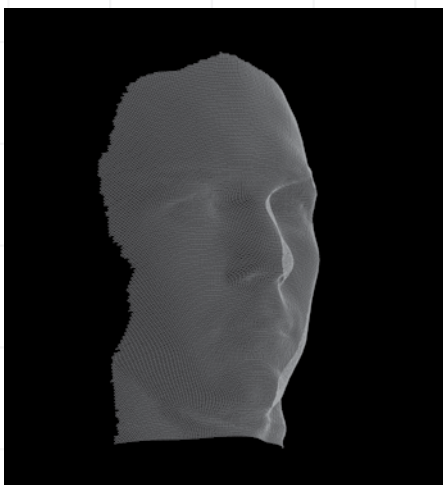
- Ability to work with cards, PINs and biometrics for the ideal balance between convenience and security



# 3D Face Reader

## Product Specifications

|                              |  |
|------------------------------|--|
| <b>Dimensions</b>            | Height 13.95" (355 mm)<br>Width 5.19" (132 mm)<br>Depth 4.57" (116 mm)                                   |
| <b>Processor</b>             | Embedded System - Multi processor TI DaVinci™ Platform   |
| <b>Terminal Block</b>        | Wiegand, TTL, RS-485, RS-232, Power and Earth Ground   |
| <b>Voltage</b>               | 24 VDC @ 3 amps  |
| <b>Power Draw</b>            | Idle: 1.50 amps; Max: 3.00 amps  |
| <b>Mounting Options</b>      | Wall-mounting bracket (standard)   |
| <b>Operating Temperature</b> | 41° - 122° F (5° - 55° C) (Foor indoor use only)<br>Recommend an environmental enclosure for outdoor use |
| <b>Certifications</b>        | FCC Class A, CE, RoHS  |



## ORDERING INFORMATION

### 3D Face Reader (Embedded Model):

- A self-contained unit with powerful embedded processing power for easy installation\*
- User configurable settings to switch between verification and identification mode (Note: 1:N mode optimal up to 1,000 templates - additional capabilities can be customized)
- 3D template enrollment, management and administration can be handled by either 3D Face SDK (for custom-built applications) or the 3Di Admin Manager

\*Power supplies not included

### About L-1 Identity Solutions Enterprise Access Division

With over 450,000 readers deployed in over 90 countries, the Enterprise Access Division of L-1 protects and secures identities and assets by helping customers address demanding access control and identity authentication requirements with innovative and reliable systems.

#### Our Advantage:

- One of the most established companies that specialize in biometric access control solutions.
- Market-tested and customer proven solutions that are interoperable, and designed to grow with you.
- Knowledgeable technical support team ready to help answer your questions and get you up and running.

### The L-1 Enterprise Access Division

#### Americas

Sales-EnterpriseAccess@L1ID.com  
800 444 0496 • 905 940 7490

#### International

Sales-Intl-EnterpriseAccess@L1ID.com  
+41 22 849 1051

#### Offices

Canada • United States

[www.L1ID.com/EnterpriseAccess](http://www.L1ID.com/EnterpriseAccess)

Copyright © 2011, L-1 Identity Solutions, Inc.  
All rights reserved. The trademarks identified herein are the trademarks or registered trademarks of L-1 Identity Solutions, Inc. or other third party.

Call or email us to [Schedule](#) an appointment today for a solution overview and demo.