



# TouchPrint™ Live Scan Advanced SDK

Fast development of fingerprint and palm print solutions

## Software Application Environments

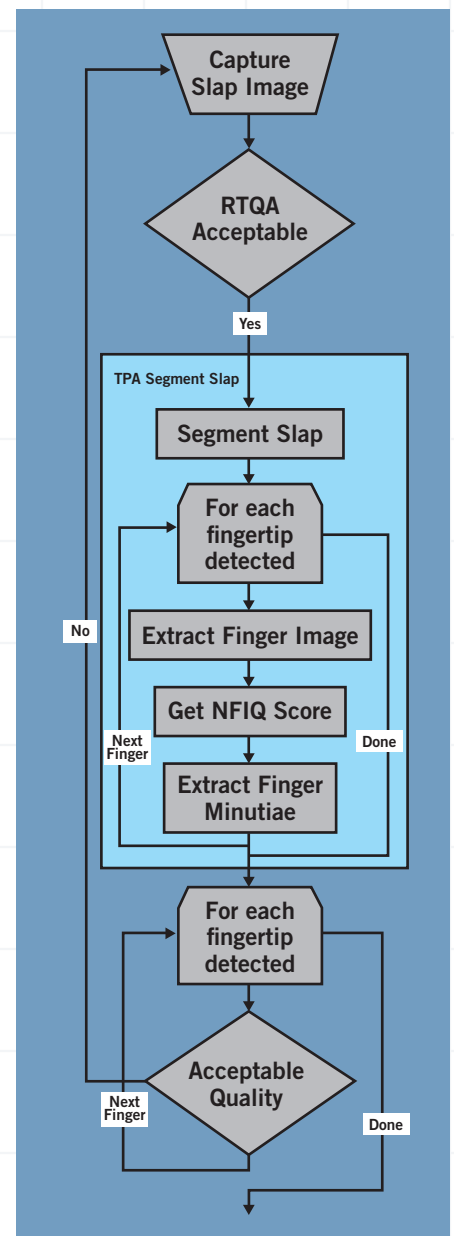
- Law Enforcement
- Enrollment
- Border Control
- Civilian Identity Programs

The TouchPrint Live Scan Advanced SDK assists application software developers to create and manage fingerprint and palm print records and images by ensuring that high-quality segments are captured fast and accurately.

Developers can build solutions with the Advanced SDK that focus on matching the minutiae of individual finger segments for identification, verification and enrollment software applications.

Additionally, the Advanced SDK combines all the functions of the Multi-Use SDK, including the means to initiate, control and manage image acquisition and analysis for a full range of capture types – rolled, thumb-slap, four-finger slap, palm and full hand. Our award-winning technical support and maintenance is available for registered customers.

## How It Works



## Features and Functions

- Individual fingerprint segments identified in multi-finger slap images
- Extracted individual finger images produced from segmented slap images
- Individual roll prints analyzed and compared against captured and extracted slap image data
- Quality checks based on NIST Fingerprint Image Quality (NFIQ) scoring standards
- Quality fingerprint capturing at 500 ppi and 1000 ppi
- High-resolution images saved, stored or compressed to industry standard formats:
  - Uncompressed TIFF
  - 500 ppi compressed WSQ
  - JPEG2000
- Developed for Microsoft Windows® environment, i.e., Windows XP/Vista and Windows 7
- Supports development environments: Microsoft C++ and .NET
- Easy integration with fingerprint and palm print devices
- Supports L-1 Fingerprint and Palm Print Devices including:
  - TouchPrint™ 3000 Series
  - TouchPrint™ 4000 models
  - TouchPrint™ 5000 Series
  - Agile TP™

## TouchPrint™ Live Scan Advanced SDK for Microsoft® Windows Specifications

### System Requirements

An L-1 TouchPrint™ Live Scan device

Microsoft® Windows XP/Vista, Windows 7

C++

.NET

5705 W. Old Shakopee Rd.  
Suite 100  
Bloomington, MN 55437  
USA  
Telephone +1-952-932-0888  
Facsimile +1-952-932-7181

[www.L1id.com](http://www.L1id.com)